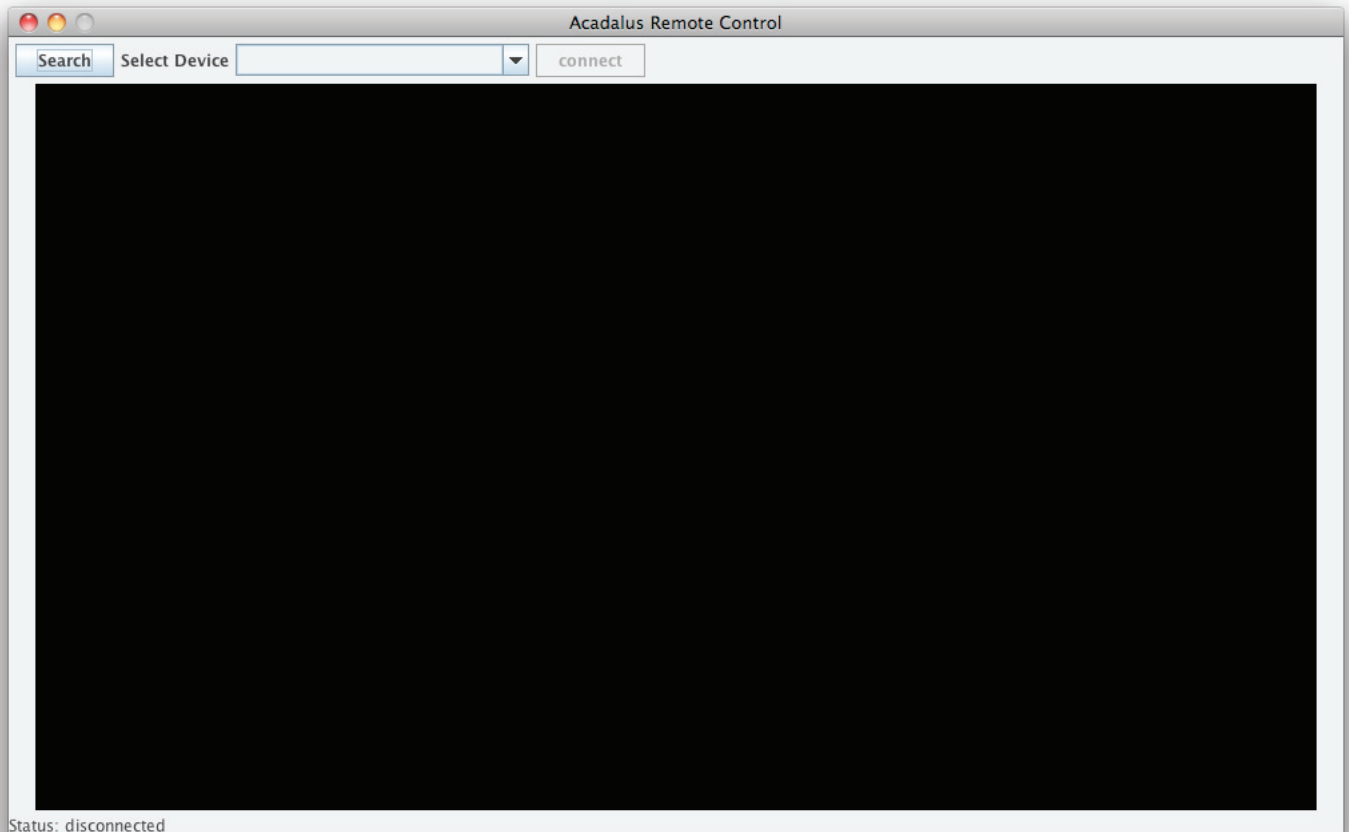
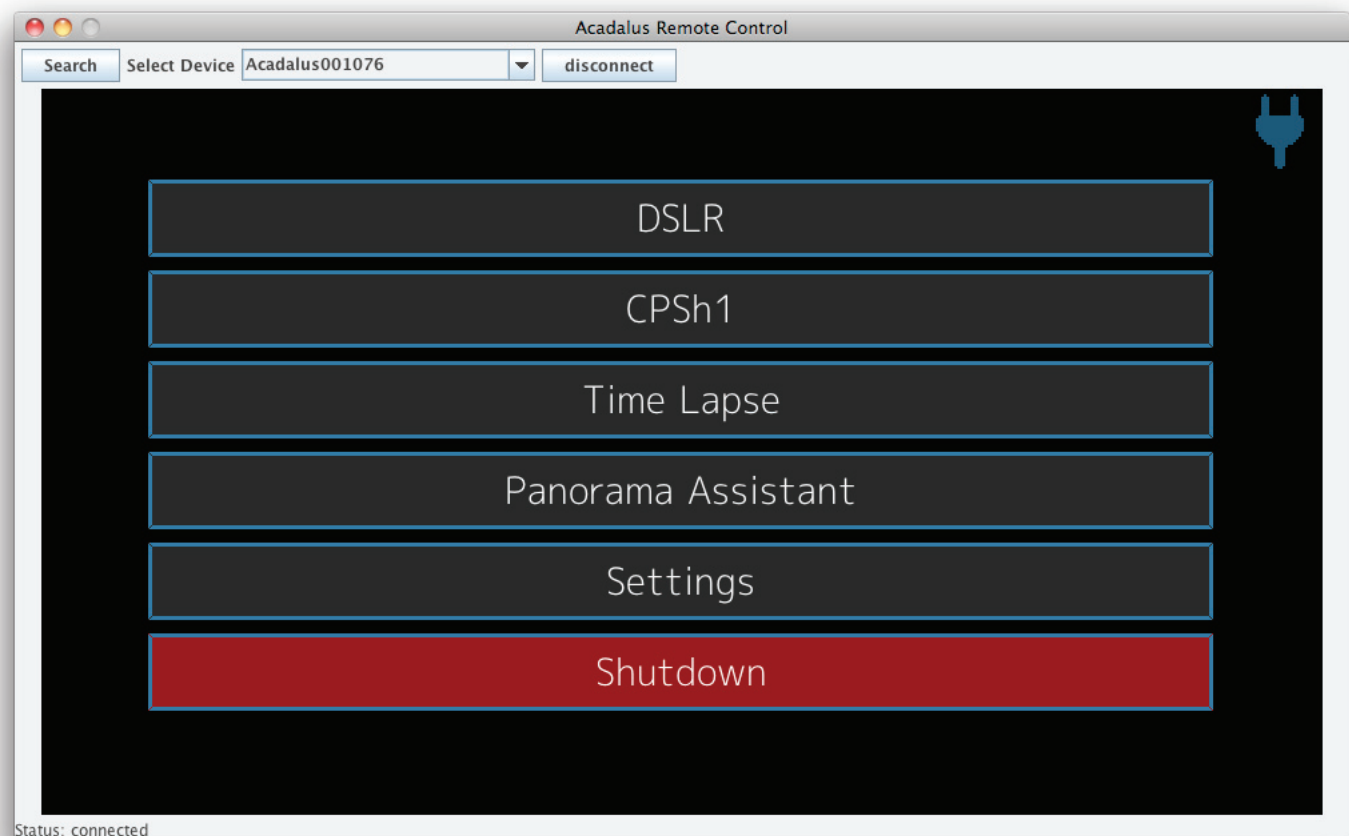


# Acadulus Remote Control V 1.0 for Mac OS X and Windows

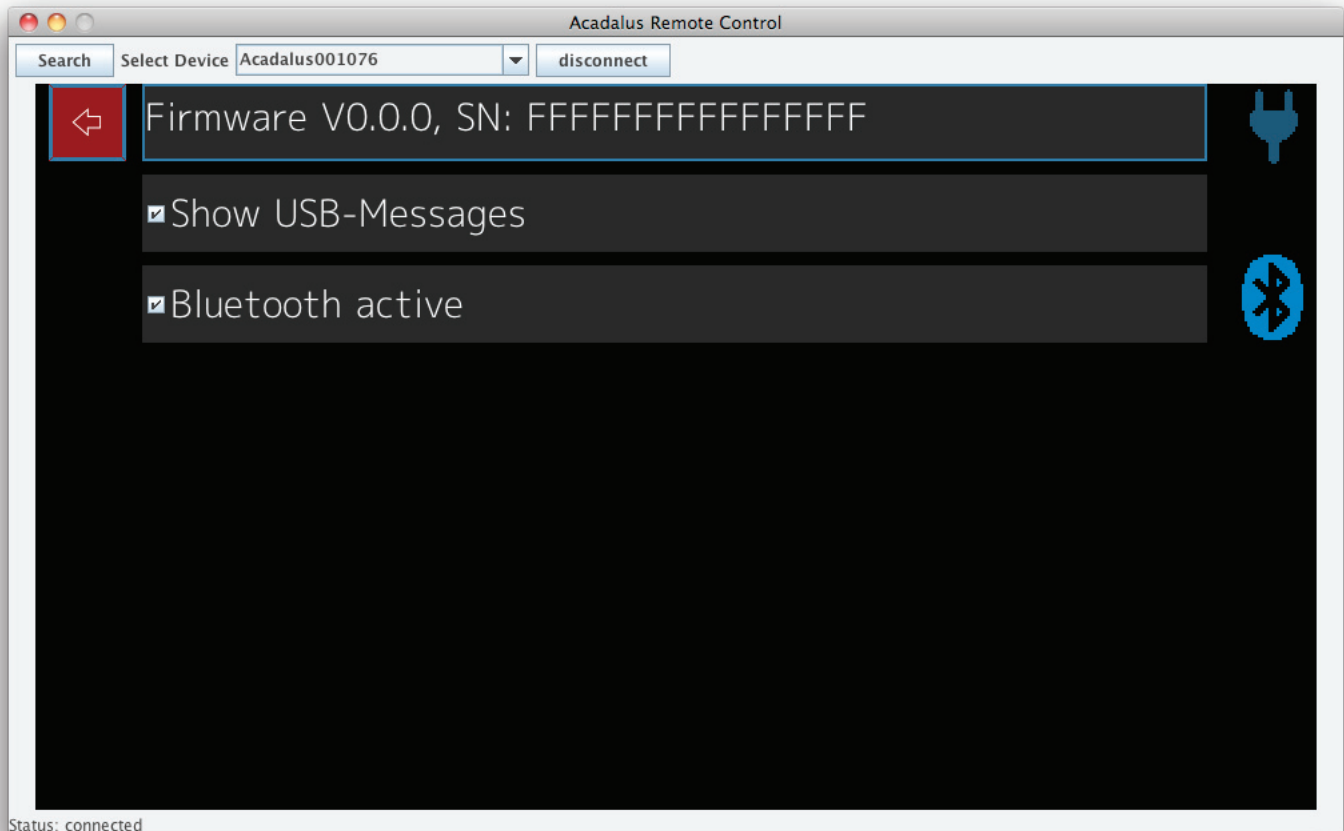
1. Install the Acadulus Remote Control Software and start it. A black screen will appear in the window of the Acadulus Remote Control indicating that it is ready to connect with the Acadulus Master Control Unit.
2. Make sure Bluetooth is enabled on your computer.



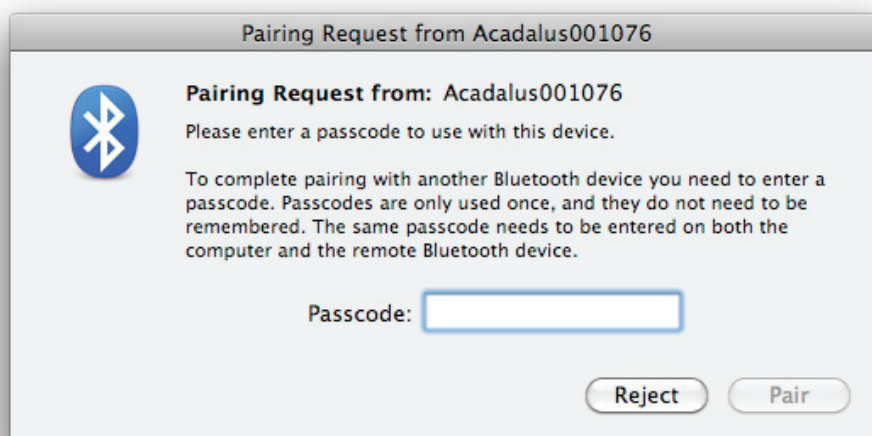
3. Turn on the Acadulus Master Control Unit.



4. Make sure the Bluetooth connection is active (the Bluetooth Logo is displayed) on the Acadalus Master Control Unit. If not, activate Bluetooth => Select "Settings", check "Bluetooth active." Now the device is ready to communicate and the Bluetooth logo will appear.



5. Click on the "Search" button in the Acadalus Remote Control window to start the search process, which can last up to a minute.
6. The device names of available Acadalus Master Control Units (usually Acadalus followed by six digits) should appear in the "Select Device" drop down list. If not, repeat Step 4 or reduce the distance between the computer and the Acadalus Master Control Unit.
7. Select the desired Acadalus Master Control Unit from the drop down list and click on the connect button.
8. Upon the first connection the computer's operating system asks for a passcode. It is: 0000



9. As soon as the connection is established, the same interface you see on the Acadalus Master Control Unit will appear on the computer.